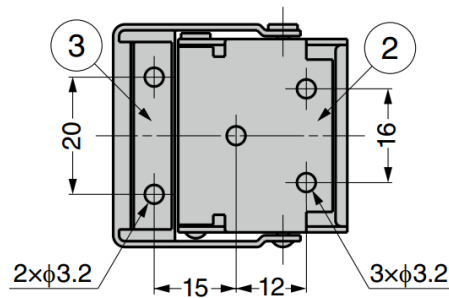
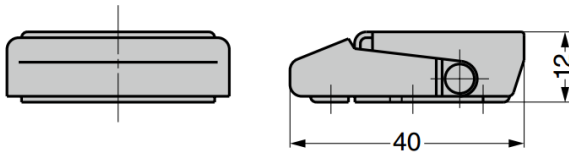
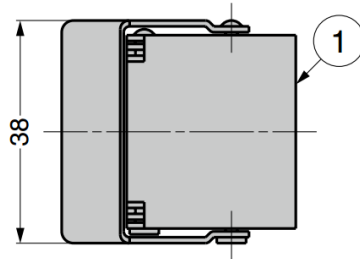
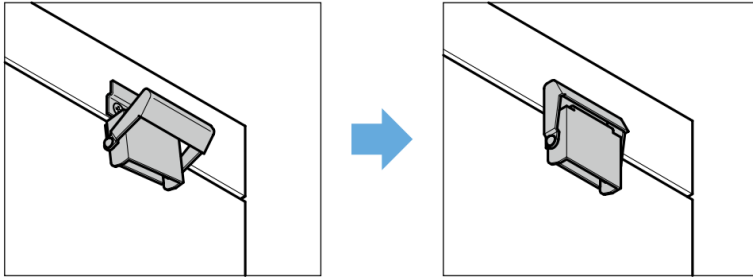


## GSTF40 Stainless Steel Draw Latch

### Recommended Screws

- M3 pan head screw



No.	Part Name	Material	Finish
①	Body	Stainless Steel (SUS304)	Barrel Polished
②	Mounting Plate		
③	Strike		

Part No.	Clamping Force		Load Capacity	
GSTF40	49 N	5 kg	300 N	30.6 kg